

CERTIFIED LAND CORNER RECORDATION

DESCRIPTION OF CORNER EVIDENCE FOUND, AND ORIGINAL RECORD (If known)

LOCATION

Found "C R" stones, in place, N'ly and S'ly of corner location.

$\frac{1}{4}$ S.26
 $\frac{1}{4}$ S.35

G.L.O. record - Granite Boulder 15 x 8 x 5; John B. Thomas, 1870.

T.15N., R.67W.
6th P.M.

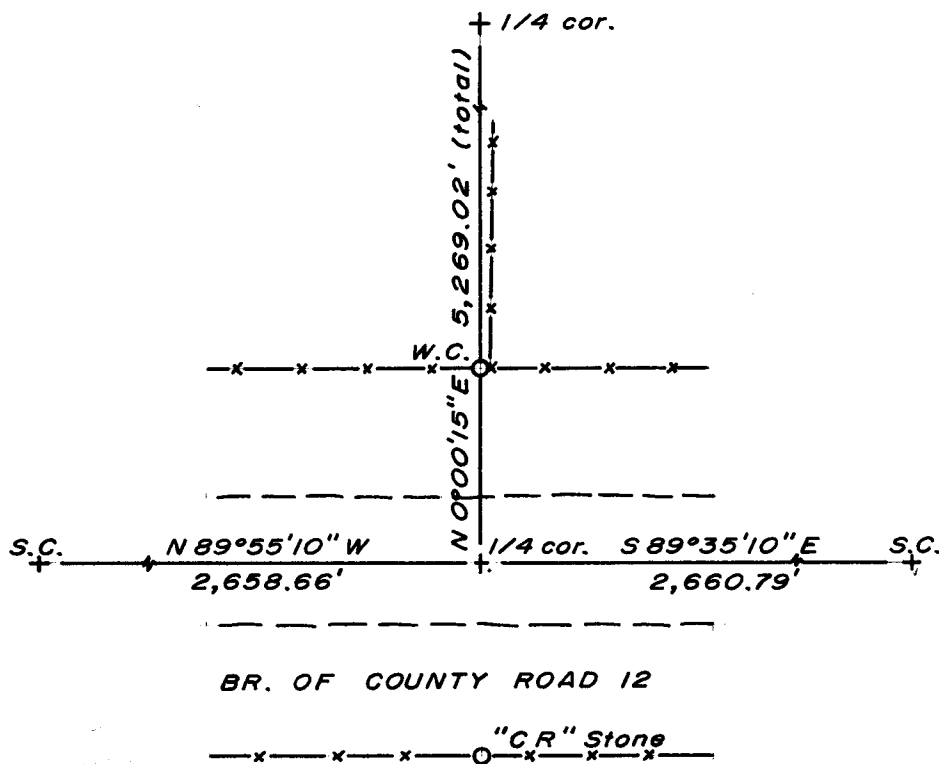
DESCRIPTION OF MONUMENT AND ACCESSORIES ESTABLISHED
TO PERPETUATE THE ORIGINAL LOCATION OF THIS CORNER:

At the corner: No monument set.

Accessories: A $1\frac{1}{2}$ " dia. x 30" long (concrete-filled) iron pipe with brass cap, set and stamped as a witness corner, bears N $0^{\circ}00'15''$ E, 40.00 feet distant.

"C R" stones bear N $0^{\circ}22'$ E, 40.08' and S $0^{\circ}22'$ W, 40.08' from corner.

SKETCH, WITH COURSE AND DISTANCE TO ADJACENT CORNER IF DETERMINED IN THIS SURVEY.
(May Sketch or Paste Reproduction on Reverse Side.)



Brass cap set 4" above ground.

Brass cap stamped:

T.15N. R.67W.

$\frac{1}{4}$ S. 26 W.C.
 $\frac{1}{4}$ S. 35

LS 519 1974

I, R.L. Hudson certify that I have carefully performed ~~or reviewed~~ the work done on the diagrammed corner as reported on this recordation form and approve the same.

R.L. Hudson Wyoming L.S. No. 519
Signature of Surveyor Registration No.

STATE OF WYOMING,
Office of Clerk and Recorder,
County of Taramie

This "corner record" was filed for record on the 24 day of June, 1924, was noted on the cross-index plat and is assigned page No. _____, in book No. _____.

John B. Husman
County Official

Cross Index No. <u>V 19</u>	T. <u>15</u>	R. <u>67</u>	Mer.
_____	T. _____	R. _____	Mer.
_____	T. _____	R. _____	Mer.
_____	T. _____	R. _____	Mer.
_____	T. _____	R. _____	Mer.
_____	T. _____	R. _____	Mer.
_____	T. _____	R. _____	Mer.

JP

Photographed
Indexed
Posted
Assessor _____

The State of Wyoming }
County of Laramie } ss

This instrument was filed for record
at 1051 o'clock 4 M. on the
24 day of June
A. D. 1924 and duly recorded in
Book _____ on page _____

John B. Williams

County Clerk & Ex-Officio Register of Deeds
By JB Deputy